

A2 Belchentunnel (SO/BL): Renewal BSA

Committente

Federal Roads Office FEDRO, Zofingen
Branch

Progettazione

IUB Engineering AG

Realizzazione

2007-2023

Costo dell'opera

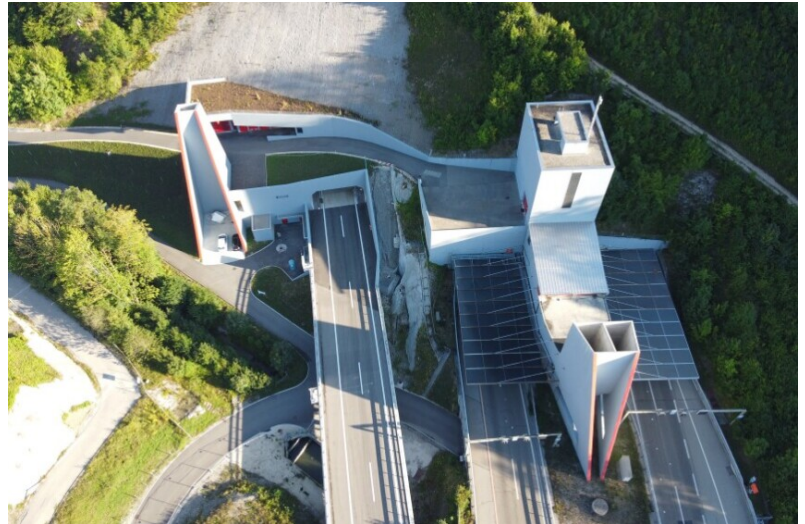
about CHF 55 Mio.

Descrizione

The Belchen tunnel is located on the BL/-SO cantonal border and is part of the A2 route between the Eptingen (BL) and Egerkingen (SO) junctions and is a good 3.2 km long. In order to be able to rehabilitate the two tunnel tubes from the 1970s, another tube was built: the Belchen Rehabilitation Tunnel (STB).

Measuring and control equipment as well as various control units were installed in the four newly built tunnel control centres and inside the tunnel. The installation will take three years. This ultimately fulfils the safety standards for tunnels. The BSA is what makes the tunnel fit for traffic. It ensures operation in normal and emergency situations.

We were responsible for the BSA of the newly built rehabilitation tunnel and thus for the full equipment with the necessary electromechanical systems and equipment. Since 2007, we have been responsible for the planning of the BSA, and in 2019 the go-ahead was given for the practical implementation.



Portal Central North



Light signalling



Cable cellar